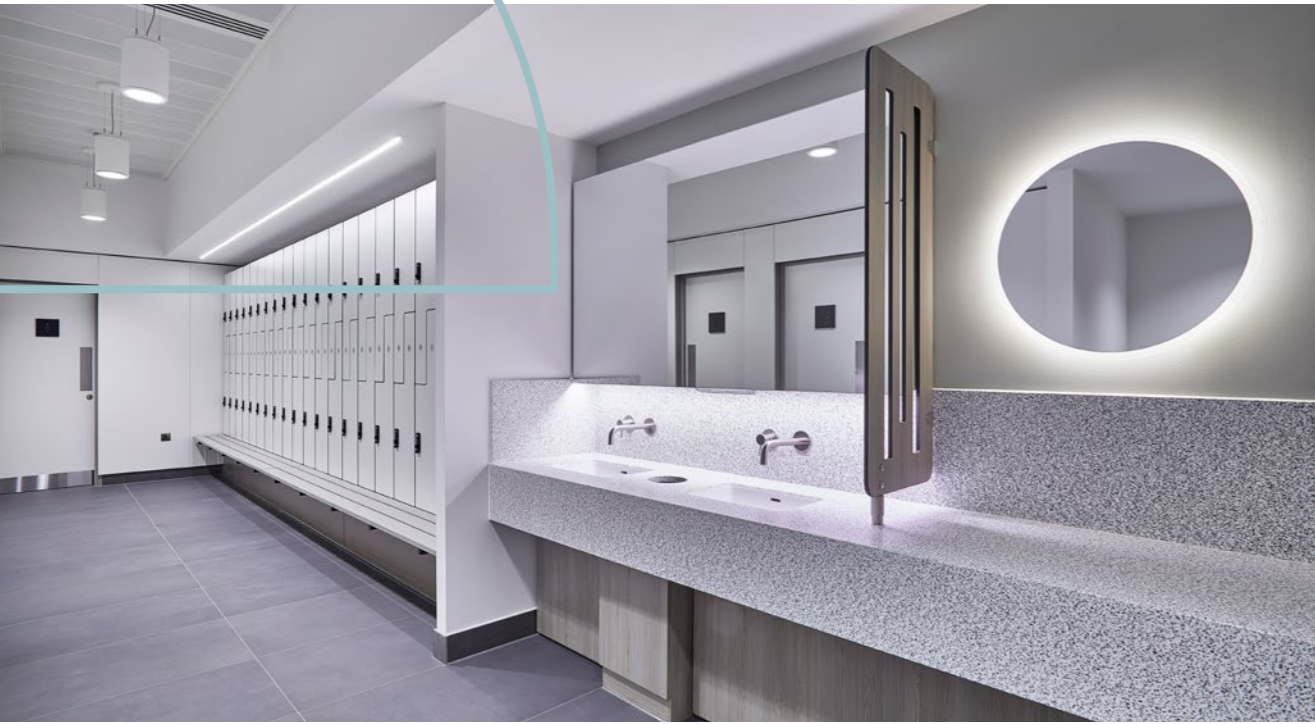


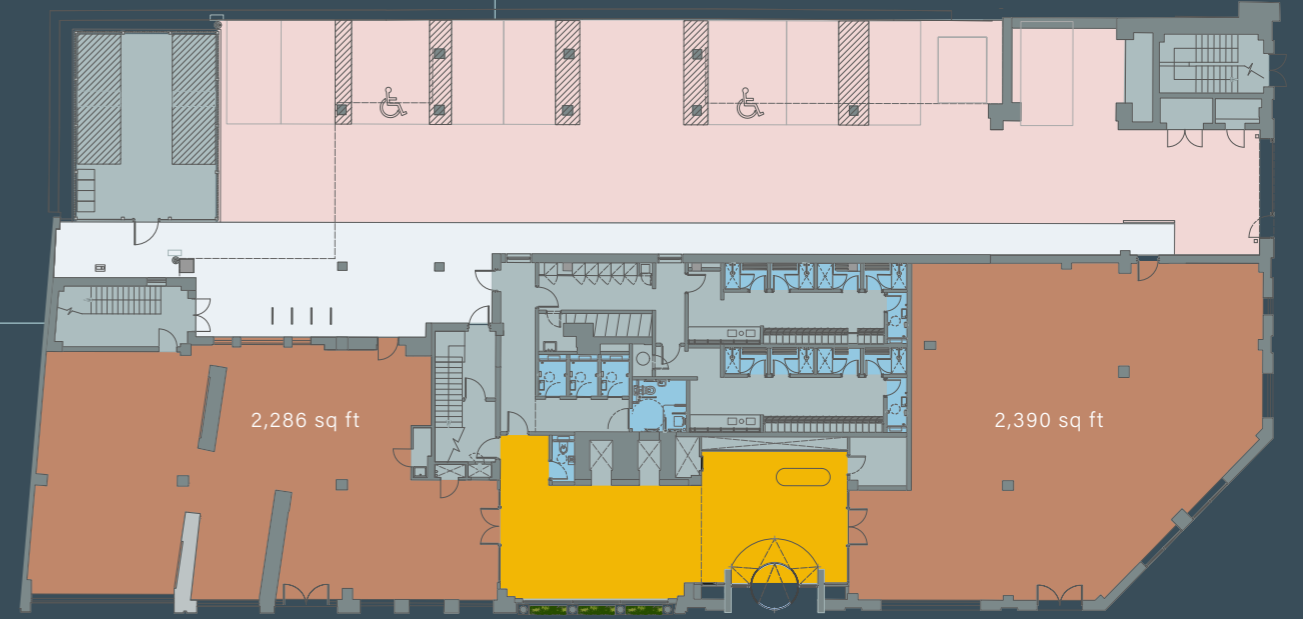
The plans

| | | |
|--------------------|---------------------|---------------------|
| 4th floor | 8,178 sq ft | 759.8 sq m |
| 3rd floor | 11,371 sq ft | 1,056.4 sq m |
| 2nd floor right | 7,223 sq ft | 671.0 sq m |
| 2nd floor left | LET | LET |
| 1st floor | 11,587 sq ft | 1076.5 sq m |
| Ground floor right | 2,390 sq ft | 222.0 sq m |
| Ground floor left | 2,286 sq ft | 212.4 sq m |
| Total: | 43,035 sq ft | 3,998.1 sq m |



G

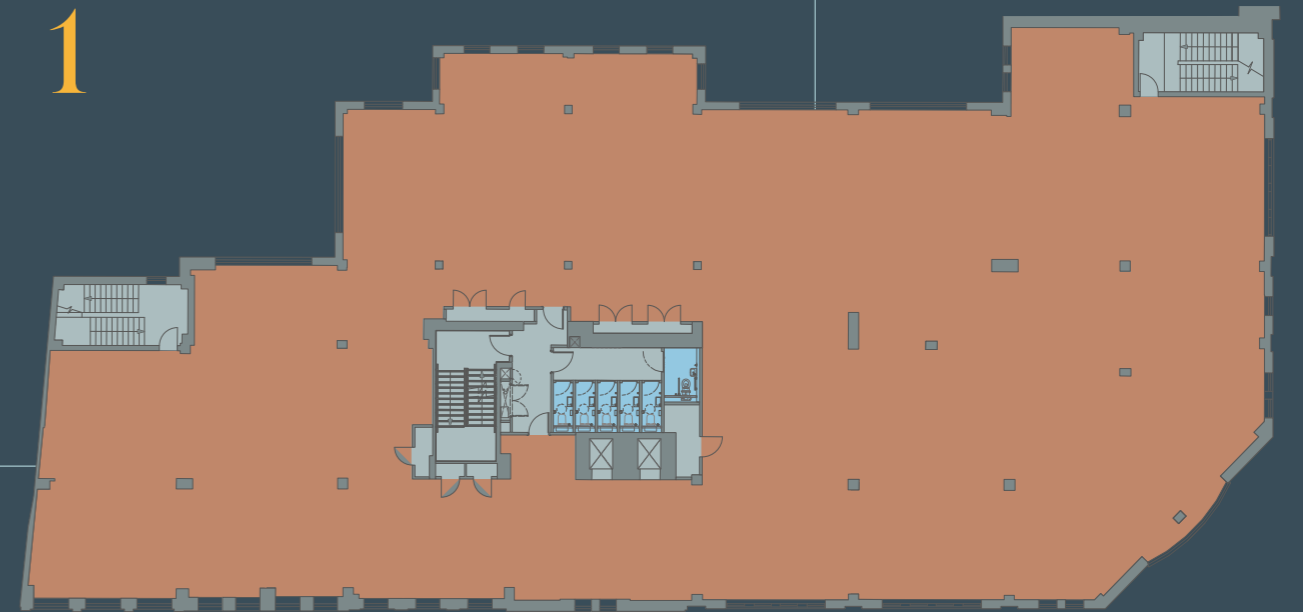
4,676 sq ft



VICTORIA STREET

1

11,587 sq ft



VICTORIA STREET

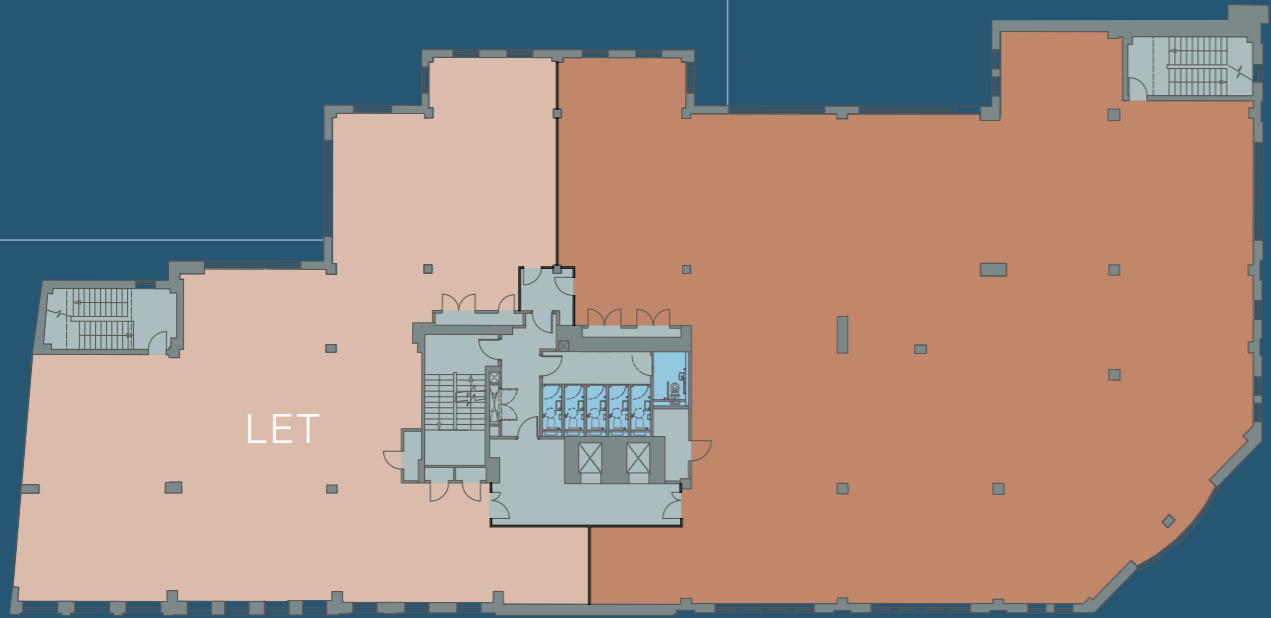
Key

- Office
- Core
- Reception
- Cycle route & Storage
- Parking
- WC's & Showers

Floor plans not to scale, for identification purposes only

2

11,598 sq ft

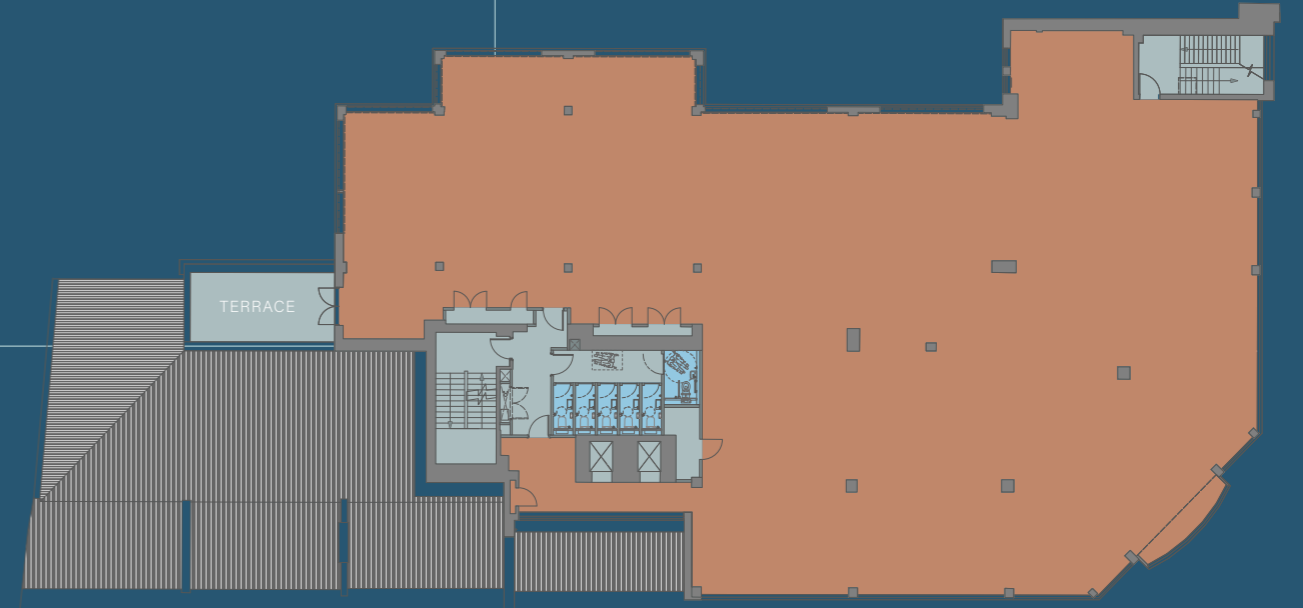


VICTORIA STREET

COUNTERSLIP

4

8,178 sq ft

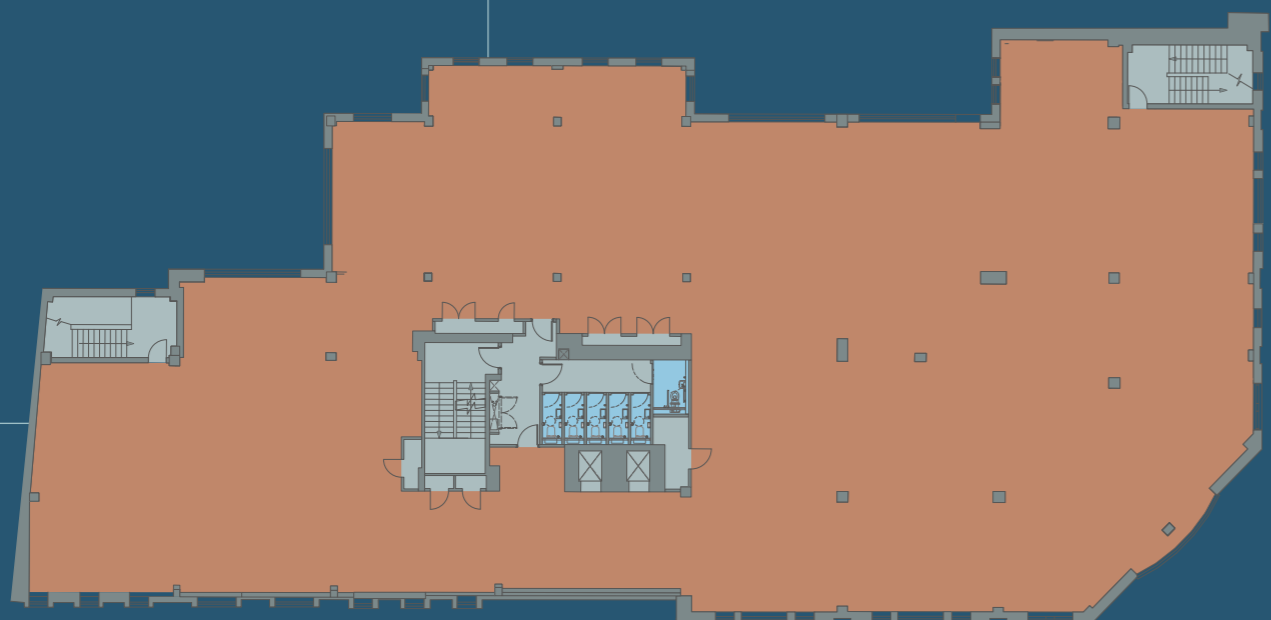


VICTORIA STREET

COUNTERSLIP

3

11,371 sq ft



VICTORIA STREET

COUNTERSLIP



Floor plans not to scale, for identification purposes only

- Key
- Office
 - Core
 - WC's & Showers