

The Plans

4th floor	8,378 sq ft	778 sq m
3rd floor	11,322 sq ft	1,052 sq m
2nd floor	11,657 sq ft	1,083 sq m
1st floor	11,622 sq ft	1,080 sq m
Ground Floor	4,790 sq ft	445 sq m
Total:	47,769 sq ft	4,438 sq m



2

11,657 sq ft

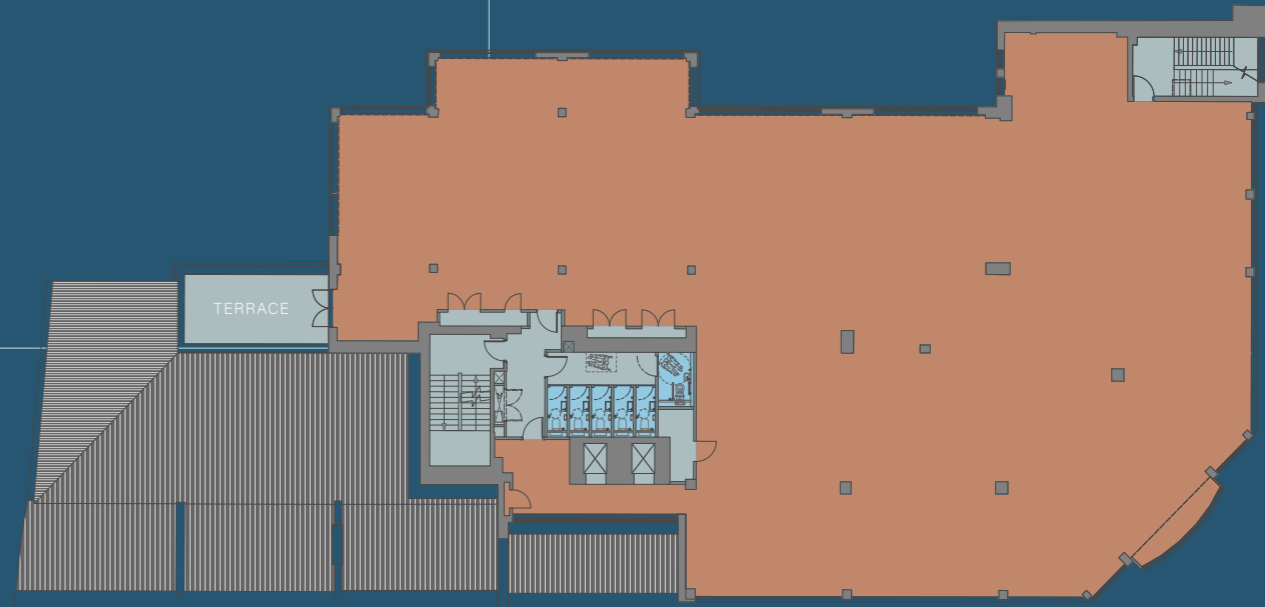


COUNTERSLIP

VICTORIA STREET

4

8,378 sq ft



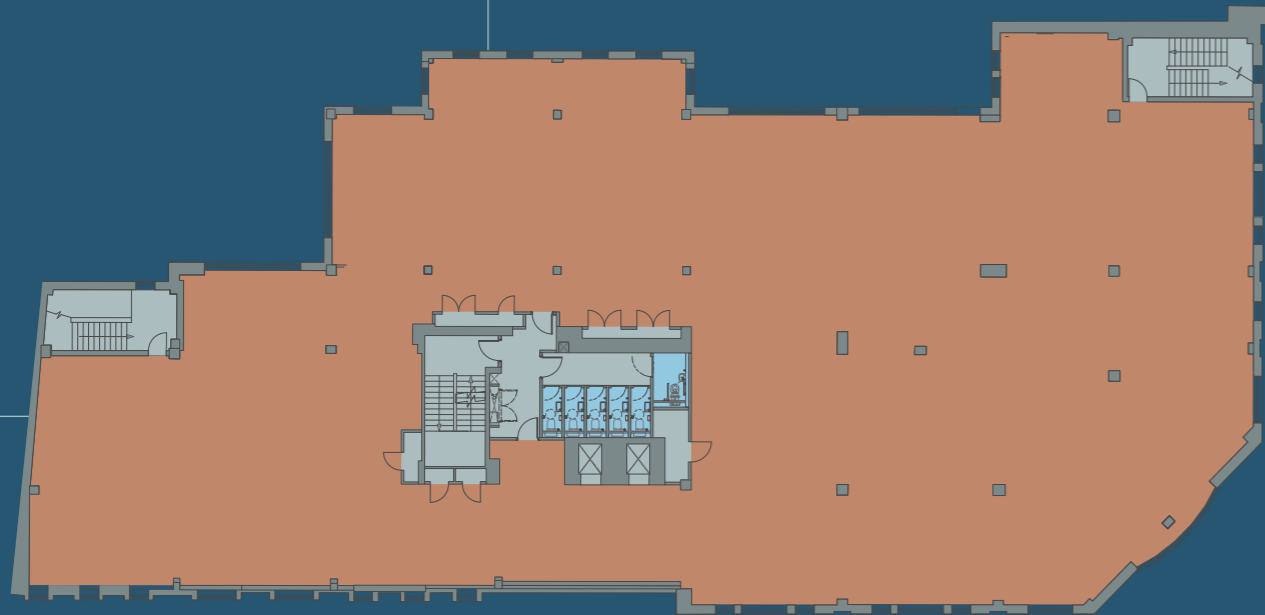
COUNTERSLIP

VICTORIA STREET

3

11,322 sq ft

COUNTERSLIP



VICTORIA STREET



Key

- Office
- Core
- WC's & Showers